

Serangga 13(1-2): 39-69

ISSN 1394-1530 © 2008, Centre for Insect Systematics, UKM & Department of Museums Malaysia

**NEW RECORDS AND TWO NEW SYNONYMS OF
PSELAPHINE SPECIES (COLEOPTERA,
STAPHYLINIDAE, PSELAPHINAE)
FROM SOUTHEAST ASIA**

Shûhei Nomura¹ & Idris A.B.²

¹Department of Zoology, National Museum of Nature and Science,
3-23-1 Hyakunin-cho, Shinjuku-ku, Tokyo, 169-0073 Japan
E-mail: nomura@kahaku.go.jp

²School of Environmental and Natural Resource Sciences,
Faculty of Sciences and Technology, Universiti Kebangsaan Malaysia,
43600 Bangi Selangor, Malaysia
E-mail: idrisgh@ukm.my

ABSTRACT

Some new distributional records and two new synonyms of pselaphine species found in Southeast Asia are given as follows (species name = new synonym if present <new distribution>): *Pareuplectops coomani* Jeannel <China, Thailand>, *Trissemus mamilla* (Schaufuss) = *Reichenbachia admiranda* Blattný <Yangon (Myanmar)>, *Reichenbachella buddha* (Raffray) <Yangon>, *Batraxis quadrata* Raffray <Thailand>, *B. brevis* Raffray <Malaysia>, *B. instabilis* Raffray <Thailand>, *B. miritaris* Raffray <Thailand>, *B. raffrayana* (Blattný) <Yangon>, *Comatopselaphus puncticollis* Raffray <Pahang (Malaysia)>, *Harmophorus barbieri* (Jeannel) <Bao Loc (Vietnam)>, *H. ciliatus* (Raffray) <Lam Dong (Vietnam)>, *Apharina conicollis* (Schaufuss) <Thailand>, *Stipesa simillimus* (Blattný) <Yangon>, *Mentraphus obenbergeri* (Blattný) <Yangon>, *Curculionellus setosus* Jeannel <Thailand>.

Tyraphus pilosus Raffray <Myanmar>, *T. testaceus* (Schaufuss) = *T. nitens* Blattný <Tuong Linh (Thailand)>, *Ctenistes hindustanus* Motschulaky <Yangon>, *C. globripalpus* Schmidt-Goebel <Yangon>, *Sognorus birmanensis* (Motschulsky) <Yangon>, *Odontalgus gracilis* Raffray <Myanmar, Vietnam>, *Centrophthalmus punctipennis* Schaufuss <Myanmar, Ban Na (Thailand)>, *C. vladimiri* Blattný <Yangon>, *C. helferi* Blattný <Vietnam>, *C. sinensis* Raffray <Vietnam>, *C. granosus* Raffray <Malaysia>.

Key words: Coleoptera, Staphylinidae, Pselaphinae, new record, Asia.

ABSTRAK

Kajian ini telah berjaya menyenaraikan beberapa rekod baru taburan dan dua sinonim baru spesies pselaphine yang telah dikenalpasti berasal daripada rantau Asia Tenggara. Berikut adalah spesies yang telah dikenalpasti (nama spesies = sinonim baru, jika ada <taburan baru>): *Pareuplectops coomani* Jeannel <China, Thailand>, *Trissemus mamilla* (Schaufuss) = *Reichenbachia admiranda* Blattný <Yangon (Myanmar)>, *Reichenbachella buddha* (Raffray) <Yangon>, *Batraxis quadrata* Raffray <Thailand>, *B. brevis* Raffray <Malaysia>, *B. instabilis* Raffray <Thailand>, *B. miritaris* Raffray <Thailand>, *B. raffrayana* (Blattný) <Yangon>, *Comatopselaphus puncticollis* Raffray <Pahang (Malaysia)>, *Harmophorus barbieri* (Jeannel) <Bao Loc (Vietnam)>, *H. ciliatus* (Raffray) <Lam Dong (Vietnam)>, *Apharina conicicollis* (Schaufuss) <Thailand>, *Stipesa simillimus* (Blattný) <Yangon>, *Mentraphus obenbergeri* (Blattný) <Yangon>, *Curculionellus setosus* Jeannel <Thailand>, *Tyraphus pilosus* Raffray <Myanmar>, *T. testaceus* (Schaufuss) = *T. nitens* Blattný <Tuong Linh (Thailand)>, *Ctenistes hindustanus* Motschulaky <Yangon>, *C. globripalpus* Schmidt-Goebel <Yangon>, *Sognorus birmanensis* (Motschulsky) <Yangon>, *Odontalgus gracilis* Raffray <Myanmar, Vietnam>, *Centrophthalmus punctipennis* Schaufuss <Myanmar, Ban Na (Thailand)>, *C. vladimiri* Blattný <Yangon>, *C. helferi* Blattný

]] <Vietnam>, *C. sinensis* Raffray <Vietnam>, *C. granosus* Raffray <Malaysia>.

Kata kunci: Coleoptera, Staphylinidae, Pselaphinae, rekod baru, Asia.

INTRODUCTION

Many pselaphine species have been known from Malaysia and its adjacent areas of Southeast Asia. Tropical Asia is a hot-spot of biodiversity including staphylinids. In this area, the pselaphine fauna has been studied by A. Raffray (1891, 1895, 1896, 1904, 1908), E. Reitter (1883), L. W. Schaufuss (1877), etc (see list of references). Most species were described between 1880-1911, and pselaphines were poorly studied after that in tropical Asia.

Recently, Nomura & Idris (2003, 2005) reviewed the pselaphine fauna of Malaysia and Singapore. Nomura & Mohamed (2008) recorded 123 pselaphine species from Borneo as the result of an inventory project conducted by the National Museum of Nature and Science, Tokyo (NSMT) at the Island Arcs in the Western Pacific.

The first author Nomura reviewed Helfer's collection preserved in the Natural History Museum, Praha, Czech Republik (NHP) in May 2006, on which Blatný (1925) described many Asian pselaphines. In March to April 2007, Nomura checked the old collection preserved in the Muséum National d'Histoire Naturelle, Paris (MNHN) made by the foregoing authors, and identified some pselaphine species collected from Tropical Asia. In the course of the present study, many new distributional records and two new synonyms were discovered, and they are reported herein.

MATERIALS AND METHODS

The pictures used here were taken by a digital camera Nikon Coolpix 995 attached to a binocular microscope at MNHN in February to March 2007 and at the Natural History Museum, Praha, Czech Republik (NHP) in May 2006. New material was

observed by binocular microscope (Leica MZ Apo, Leica Microsystems, Germany) and identified by the first author with types or identified specimens in the original collection in European museums. The new specimens were photographed by the digital microscope system (VHX-200, Keyence Tokyo, Japan) in NSMT.

For each literature in the present paper, author name(s), year and the following symbol (a, b, c,...) which are coincident with the list of references shown in the tail as Nomura *et. al.*(2008b). New distributional record is shown by asterisks.

Abbreviations in the present study are as follows: MNHN: Muséum National d'Histoire Naturelle, Paris; NHM: Natural History Museum, Praha; NSMT: National Museum of Nature and Science, Tokyo (formerly National Science Museum, Tokyo); UKM: Universiti Kebangsaan Malaysia, Bangi. The identified specimens in the present study are preserved in UKM and NSMT.

SYSTEMATIC NOTES

Subfamily Pselaphinae Supertribe Euplectitae Tribe *incertae sedis*

Pareuplectops coomani Jeannel

Pareuplectops coomani Jeannel, 1957: 7.

Type material examined. 1 syntype male, data unrecorded, in Jeannel's collection (MNHN).

Specimens examined. <CHINA>1 male, Tropical rainforest in limestone area near Tropical Botanical Garden, Menglum, Mengla, Xishuangbanna, S Yunnan, 10.ix.1993, Y. Watanabe leg.; <THAILAND> 1 female, Lum Jangwat (sifting leaf litter), Khao Ang Ru Nai N. P., E Thailand, 19.x.2005, S. Nomura leg.

Distribution. China*, Vietnam, Thailand*.

Remarks. This genus is easily distinguished from allied genera by having the parallel-sided body, the trapezoidal head with large and shallow excavation on the dorsal side. The species of this genus is common in tropical Asia as shown in Nomura *et al.*, (2008b). This species was described from Vietnam, and is recorded from China and Thailand for the first time.

Supertribe Goniaceritae
Tribe Brachyglutini
Subtribe Brachyglutina

Trissemus mamilla (Schaufuss)

Reichenbachia mamilla Schaufuss, 1877: 9.

Trissemus mamilla : Jeannel, 1952: 88.

Reichenbachia admiranda Blatný, 1925: 206, syn. nov.

Type material examined. 1 syntype female? of *R. mamilla*, in Raffray's collection (MNHN), *R. mamilla*, A. Raffray det. / TYPE (red) / Muséum Paris 1917 Coll. A. Raffray / Br. (?) Baumeisteri ♀ / Siam. 1 syntype male? of *Reichenbachia admiranda* (NHP), Mus. Pragense Tenasserim Coll. Helfer / TYPUS (red) / *R. admiranda* m. Blatný det. / Mus. Nat. Pragae Inv. 18873.

Specimens examined. < MYANMAR > 1 male, Shue Hninsi, by LT, Mayangon T/S, Yangon, May 2001, Y. Kusakabe leg.; 3 males, 4 females, same data as above, but Jun. -Jul. 2001; 4 females, same data as above, but Apr. -May 2002; 2 males, same data as above, but Jul. 2002; 2 males, 1 female, same data as above, but May 2003; 1 male, same data as above, but Jun. 2003; 5 males, 7 females, same data as above, but Jun. 2004; 3 females, same data as above, but Jul. 2004; 1 female, same data as above, but May 2005.

Distribution. Thailand, Vietnam, Myanmar (Tenasserim, Yangon*).

Remarks. By examining the type material of Schaufuss, it was confirmed that this species should be classified into the genus *Trissemus*. It was already combined with the generic name *Trissemus* by Jeannel (1952). This genus is separated from *Reichenbachia* by having three basal foveae on each elytron.

***Reichenbachella buddha* (Raffray)**

Reichenbachia buddha Raffray, 1891: 487.

Reichenbachia (Reichenbachella) budha (misspelling): Jeannel, 1952: 88.

Type material examined. 1 syntype male?, type data unrecorded, in Raffray's collection (MNHN).

Specimens examined. < MYANMAR > 2 females, Shue Hninsi, by LT, Mayangon T/S, Yangon, May 2003, Y. Kusakabe leg.; 5 females, same data as above, but Nov. 2003; 1 male, same data as above, but Jun. 2004.

Distribution. Thailand, Vietnam, Myanmar (Yangon*).

Remarks. The genus *Reichenbachella* was originally established as a subgenus of *Reichenbachia* by Jeannel (1949). However, it was upgraded to a full genus as shown in Jeannel (1957). After Jeannel (1949), it is distinguishable from *Reichenbachia* by having the coarsely punctuate pronotum and the setate paramere of the male genitalia.

***Batraxis quadrata* Raffray**

Batraxis quadrata Raffray, 1895: 26.

Type material examined. 1 syntype male?, in Raffray's collection (MNHN), *B. quadrata* A. Raffray det. / TYPE (red) / Muséum Paris 1917 Coll. A. Raffray / Singapore.

Specimens examined. <THAILAND> 2 females, nr. Visitor Center, 750m alt., by Tullgren sampling, Khao Yai N. P., 26. x. 2006, S. Nomura leg.; 1 male, 1 female, 33km Point, 750m alt., by sifting leaf litter, Khao Yai N. P., 27. x. 2006, S. Nomura leg.; 17 exs., same data as above, but Tullgren sampling; 13 exs., Dan Chang, 750m alt., by sifting leaf litter, Khao Yai N. P., 27. x. 2006, S. Nomura leg.; 4 exs., same data as above, but 29. x. 2006; 9 exs., same data as above, but by Tullgren sampling.

Distribution. Singapore, Malaysia (Penang Is.), Thailand*.

Remarks. This species is similar to the other species of the genus *Batraxis*, but is distinguishable by having the antenna formed by very slender fragellum and peanut-shaped segment XI. It is already recorded as *Batraxis* sp. 1 in the list from Khao Yai National Park (Nomura *et al.*, 2008b).

Batraxis brevis Raffray

Batraxis brevis Raffray, 1895: 36.

Type material examined. 1 syntype male?, data unrecorded, in Raffray's collection (MNHN).

Specimens examined. <MALAYSIA> 1 male, Pasoh F. R. (by fine Malaise trap), Negeri Sembilan, 8-15. iv. 1993, K. Konishi and K. Maeto leg.

Distribution. Singapore, Malaysia*.

Remarks. This species is easily separated from the other *Batraxis* species by having very long and slender antenna including triangular terminal segment XI.

Batraxis instabilis Raffray

Batraxis instabilis Raffray, 1895: 30.

Type material examined. 1 syntype male?, data unrecorded, in Raffray's collection (MNHN).

Specimens examined. <THAILAND> 1 male, 33km Point, 750m alt., by Tullgren sampling, Khao Yai N. P., 27.x.2006, S. Nomura leg.; 1 female, Dan Chang, 750m alt., by Tullgren sampling, Khao Yai N. P., 29. x. 2006, S. Nomura leg.

Distribution. Singapore, Malaysia (Penang Is.), Thailand*.

Remarks. Very similar to the other *Batraxis* species, but differs in having the abdominal tergite IV without longitudinal sulci and the thick and triangular antennal segment XI. This species is already listed up as *Batraxis* sp. 5 by Nomura *et al.* (2008b) from Khao Yai National Park.

***Batraxis miritaris* Raffray**

Batraxis miritaris Raffray, 1896: 254.

Type material examined. 1 syntype male?, data unrecorded, in Raffray's collection (MNHN).

Specimens examined. <THAILAND> 1 male, Dan Chang, 750m alt., by Tullgren sampling, Khao Yai N. P., 29.x.2006, S. Nomura leg.

Distribution. Indonesia (Sumatra), Thailand*.

Remarks. This species is similar to *B. instabilis* in having strongly broadened elytra and abdomen, but is separable by the large body and the antennal club with thick and transverse segment X and ovoid segment XI. It is already recorded as *Batraxis* sp. 6 in the list from Khao Yai National Park in Nomura *et al.* (2008b).

***Batraxis raffrayana* (Blattný), comb. nov.**

Raffrayella raffrayana Blattný, 1925 : 205.

Type material examined. 1 syntype male? (NHP), Mus. Pragense Tenasserim Coll. Helfer / TYPUS (red) / *Raffrayella Raffrayana* Blattný det. / 19 / Mus. Nat. Pragae Inv. 18870 / *Batraxis* =*Raffraella* sp. B. det. Löbl 1971.

Specimens examined. <MYANMAR> 1 male, 1 female, Shue Hninsi, by LT, Mayangon T/S, Yangon, May 2001, Y. Kusakabe leg.

Distribution. Myanmar (Tenasserim, Yangon*).

Remarks. Blattný (1925) established the new genus *Raffrayella* for this new species, but it was synonymised with *Batraxis* by Besuchet (1986).

This species was described as the type species of *Raffrayella* from Tenasserim, Myanmar on the basis of the Helfer collection (in NMP) probably collected at light. It has not been combined with *Batraxis* before the present study. It is separated from the other *Batraxis* species by having the thick and short antenna with ovoid segment XI.

Comatopselaphus puncticollis Raffray

Comatopselaphus puncticollis Raffray, 1895: 39.

Type material examined. 1 syntype male?, data unrecorded, in Raffray's collection (MNHN).

Specimens examined. <MALAYSIA> 1 male, Endau-Rompin Nat. Res., nr. Base Camp, 150m alt., Pahang, 8. vii. 2003, S. Nomura leg.: 1 male, same data as above, but by sifting leaf litter, 22.vii.2004: 3 males, 1 female, same data as above, but, nr. Gate, 150-200m alt., by sifting leaf litter, 23.vii.2004.

Distribution. Malaysia (Penang Is., Pahang*)

Remarks. In Raffray's collection preserved in MNHN, Paris, this species is classified under the name of "*Atenisodus puncticollis*". However, it has not been combined with *Atenisodus* in literature, and the generic name *Comatopselaphus* is still valid.

Tribe Arnyllini

Harmophorus barbieri (Jeannel), comb. nov.

Arnyllium barbieri Jeannel, 1952: 102.

Type material examined. Holotype male (MNHN), (red, square) / Saigon 21. x. 50 I. Barbier / TYPE (red) / *Arnyllium barbieri* n.

Specimens examined. <VIETNAM> 1 male, 2 females, 14 km from Bao Loc, Lam Dong Prov., 4.v.1997, Haruki Karube leg.

Distribution. Vietnam (Saigon = Ho Chi Minh City, Bao Loc*).

Remarks. This species was described base only on a male type specimen (holotype) collected at light after the original description. It is closely allied to *H. ciliatus* as mentioned below (Fig. 30) by having the slender and symmetrical antenna, but separable by the smaller body.

The male of this species is easily separated from the female by having the large gold-colored setiferous patch on the dorsal side in apical half of the fore tibia (very small in the female). It is recognized in the male holotype, but it was not commented nor illustrated in Jeannel's original description.

Harmophorus ciliatus (Raffray), comb. nov.

Arnyllium ciliatum Raffray, 1896: 279

Specimens examined. <VIETNAM> 1 male, 1 female, Dam B'ri, ca. 800m alt., Lam Dong Prov., 28.iv.2003, S. Nomura leg.; 1 male, same data as above, but 2.v.2003.

Distribution. Singapore, Malaysia (Penang Is.), Philippine, Vietnam (Tonkin = Ha Noi, Lam Dong*).

Remarks. This species was originally described as a member of the genus *Arnyllium* from Singapore and Penang Island, Malaysia. By later studies, it was clarified that the genus *Arnyllium* Reitter, 1884 was a junior synonym of the older genus *Harmophorus* Motschulsky, 1851. The first author Nomura was unable to examine the type specimen of *A. ciliatum*. However, the new material was checked with the old specimens identified by Raffray collected from the Philippines and Vietnam (Tonkin).

In this genus, the male is usually very similar to the female in external structures, but the male of this species can be distinguished from the female by having the gold-colored setiferous patch on the dorsal side in apical fourth of the fore tibia (none in the female).

Supertribe Pselaphitae
Tribe Hybocepharini

Apharina conicicollis (Schaufuss)

Filiger conicicollis Schaufuss, 1877: 17.

Apharina conicicollis: Raffray, 1904: 436.

Type material examined. 1 syntype male?, in Raffray's collection (MNHN), *A. conicicollis* A. Raffray det. / TYPE (red) / Muséum Paris 1917 Coll. A. Raffray / *Filiger conicicollis* Schaufuss Siam / Siam.

Specimens examined. <THAILAND> 1 male, Pha Diew Die View Point, 1,150m alt., by FIT (NG-3), Mt. Khao Khiew, Khao Yai N. P., 26-30.x.2006, S. Nomura leg.

Distribution. Thailand (Bangkok, Kao Yai N. P.*)

Remarks. The genus *Apharina* is separated from the other members of the tribe Hybocephalini by having the antennal club formed by the terminal two segments. This species is already recorded as “*Apharina* sp. 1 (No. 54 in p. 284)” from Khao Yai NP in Nomura *et al.* (2008b)

***Stipesa simillimus* (Blattný), comb. nov.**

Filiger simillimus Blattný, 1925: 210.

Type material examined. 1 syntype male? (NHP), Mus. Pragense Tenasserim Coll. Helfer / TYPUS (red) / *F. simillimus* Blattný det. / 30.

Specimens examined. <MYANMAR> 1 male, Shue Hninsi, by LT, Mayangon T/S, Yangon, May 2001, Y. Kusakabe leg.; 1 male, same data as above, but Apr. – May 2002; 1 male, 1 female, same data as above, but May 2003; 1 male, 1 female, same data as above, but May 2004; 1 male, same data as above, but Apr. 2005.

Distribution. Myanmar (Tenasserim, Yangon*).

Remarks. This species is similar to the other *Stipesa* species, but differs in having the large and thick body.

Tribe Pselaphini

***Mentraphus obenbergeri* (Blattný), comb. nov.**

Pselaphus obenbergeri Blattný, 1925: 211.

Type material examined. 1 syntype male? (NHP), Mus. Pragense Tenasserim Coll. Helfer / TYPUS (red) / *P. obenbergeri* m. Blattný det. / Mus. Nat. Pragae Inv. 18886 / *Mentraphus obenbergeri* Blatt. Cl. Besuchet dét. V 1971.

Specimens examined. <MYANMAR> 1 male, Shue Hninsi, by LT, Mayangon T/S, Yangon, Apr.-May 2002, Y. Kusakabe leg.; 1 male same data as above, but Apr. 2005.

Distribution. Myanmar (Tenasserim, Yangon*).

Remarks. *Pselaphus obenbergeri* was described on the basis of the imperfect holotype (monotypy). Dr. Besuchet in Genève identified it as a species of *Mentraphus* as shown in the identification label, but it has not been published. The first author, Nomura's examination confirmed that Besuchet's identification was correct and it was collected also from Yangon.

Curculionellus setosus Jeannel

Curculionellus setosus Jeannel, 1952: 104.

Type material examined. 1 syntype male? (MNHN), Saigon 27.xii.49 I. Barbier / TYPE (red) / *Curculionellus setosus* n. sp.

Specimens examined. <THAILAND> 1 female, Forest Station, by LT, Khao Ang Runai N. P., E-Thailand, 18. x. 2005, S. Nomura leg.

Distribution. Vietnam, Thailand*.

Remarks. The genus *Curculionellus* is very distinct in the tribe Pselaphini by having the stout body covered with coarse punctures and thick suberect hairs and the short and cylindrical palpal segment IV. It is distributed in Northeast to Southeast Asia and Oceania.

Tyraphus pilosus Raffray

Tyraphus pilosus Raffray, 1891: 494.

Type material examined. 1 syntype male?, in Raffray's collection (MNHN), *T. pilosus* A. Raffray det. / Tonkin Annam / TYPE (red)

/ Muséum Paris 1917 Coll. A. Raffray / Annam Phu Phong 3.iv.1910.

Specimens examined. <MYANMAR> 1 male, Shue Hninsi, by LT, Yangon, May 2001, Y. Kusakabe leg.

Distribution. Vietnam, Myanmar*.

Remarks. This species is similar to the next species, *T. testaceus* in having the minutely punctate and shiny pronotum on dorsal surface, but separable by the large and elongate body. It was already recorded from Tonkin (= Ha Noi, Vietnam) by Jeannel (1957: 25).

Tyraphus testaceus (Schaufuss)

Tychus testaceus Schaufuss, 1877: 4

Tyraphus testaceus: Raffray, 1904: 454.

Tyraphus nitens Blattný, 1925: 213, syn. nov.

Type material examined. 1 syntype of *Tychus testaceus* male? (MNHN), *T. testaceus* A. Raffray det. / TYPE (red) / Muséum Paris 1917 Coll. A. Raffray / *Tychus testaceus* n. Siam / Bangkok / Siam. 1 syntype of *Tyraphus nitens* male? (NHP), Mus. Pragense Tenasserim Coll. Helfer / Ind. or. Helfer / TYPUS (red) / *Tyraphus nitens* Blattný det. / Mus. Nat. Pragae Inv. 18889.

Specimens examined. <VIETNAM> 41 exs., Tuong Linh, near Phu Ly, 24-28.v.1966, Exp. Gy. Topál, Nr. 565, collected by lamp.

Distribution. Thailand, Myanmar, Vietnam (Saigon, Tuong Linh*).

Remarks. This species is separated from the other members of this genus by the almost smooth and shiny pronotum and the small body. It was already recorded from Saigon (= Ho Chi Minh City, Vietnam) by Jeannel (1952: 103).

Tribe Ctenistini

Ctenistes hindustanus Motschulsky

Ctenistes hindustanus Motschulsky, 1851: 482.

Identified material examined. 1 male, data unrecorded, in Helfer's collection (NHP).

Specimens examined. <MYANMAR> 1 male, 4 females, Shue Hninsi, by LT, Mayangon T/S, Yangon, Jun.-Jul. 2001, Y. Kusakabe leg.; 1 male, same data as above, but Nov. 2003; 1 female, same data as above, but May 2004; 1 female, same data as above, but Jun. 2004; 2 males, same data as above, but Apr. 2005.

Distribution. Myanmar (Tenasserim, Yangon*).

Remarks. This species was described from "Ind. or. (Indes orientale =Tenasserim)" on the basis of Helfer's collection in the Natural History Museum in Praha. The author Nomura has been unable to examine Motschulsky's type. However, he identified new material with an identified specimen by Blatný in Helfer's collection in Praha.

Ctenistes globripalpus Schmidt-Goebel

Ctenistes globripalpus Schmidt-Goebel, 1838: 14.

Centrotoma globripalpus: Raffray, 1904: 472.

Specimens examined. <MYANMAR> 1 male, 1 female, Shue Hninsi, by LT, Mayangon T/S, Yangon, May 2001, Y. Kusakabe leg.; 1 male, same data as above, but Jun.-Jul. 2001; 1 male, 1 female, same data as above, but Apr. 2005.

Distribution. India (Calcutta), Myanmar*.

Remarks. This is one of the oldest pselaphine species described from Asia. The author Nomura has not been able to examine the type specimen by Schmidt-Goebel (1838). However, it can easily be identified by having the characteristic form of the maxillary palpus, which was illustrated in the original description. This species was combined with the genus *Centrotoma* (Palearctic, myrmecophilous) by Raffray (1904, 1908, 1911, probably by mistake). After Nomura's examination of new material, it should be classified to the genus *Ctenistes*.

***Sognorus birmanensis* (Motschulsky)**

Ctenistes birmanensis Motschulsky, 1851: 481.

Indiella birmanensis: Blattný, 1925: 215.

Identified material examined. 1 female, data unrecorded, in Helfer's collection (NHP).

Specimens examined. <MYANMAR> 1 male, 2 females, Shue Hninsi, by LT, Mayangon T/S, Yangon, May 2001, Y. Kusakabe leg.; 1 male, 1 female, same data as above, but Jun.-Jul. 2001; 1 female, same data as above, but Jul.-Aug. 2001; 2 females, same data as above, but Apr.-May 2002; 2 males, 1 female, same data as above, but May 2003; 1 male, same data as above, but Jun. 2003; 1 male, same data as above, but Jul. 2003; 1 male, 1 female, same data as above, but May 2004; 1 male, same data as above, but Jun. 2004; 3 females, same data as above, but Apr. 2005.

Distribution. Myanmar (Tenasserim, Yangon*).

Remarks. The genus *Indiella* was established by Blattný (1925) for the type species, *Ctenistes birmanensis* Motschulsky from Helfer's collection. However, it was synonymized with *Sognorus* Reitter, 1881 by Besuchet (1986: 260). Nomura has been unable to examine Motschulsky's type, but this species was easily identified based on Blattný's redescription and his identified specimen in Helfer's collection.

Tribe Odontalgini

Odontalgus gracilis Raffray

Odontalgus gracilis Raffray, 1904: 469.

Type material examined. 1 syntype male, data unrecorded, in Raffray's collection (MNHN).

Specimens examined. <MYANMAR> 1 male, Shue Hninsi, by LT, Yangon, Jul.-Aug. 2001, Y. Kusakabe leg. <VIETNAM> 1 male, Deo Bao Loc, ca. 800m alt., by LT, Lam Dong Prov., 2. v. 2000, S. Nomura leg.

Distribution. Indonesia (Sumatra), Myanmar*, Vietnam*.

Remarks. This species is easily separable from the other species of the genus by having the elongate and slender antenna and the strongly shortened body.

Tribe Tyrini

Subtribe Centrophthalmina

Centrophthalmus punctipennis Schaufuss

Centrophthalmus punctipennis Schaufuss, 1877: 21.

Centrophthalmus punctipennis var. *punctatissimus* Schaufuss, 1877: 22.

Centrophthalmus inaequalis Schaufuss, 1877: 22.

Centrophthalmus quadristriatus Schaufuss, 1877: 22.

Type material examined. 3 syntypes of *C. punctipennis* male?, in Raffray's collection (MNHN). Type data of a syntype: *C. punctipennis* A. Raffray det. / TYPE (red) / Muséum Paris 1917 Coll. Raffray / *C. punctipennis* n. Birma / Birmanie. 1 syntype of *C. punctipennis* var. *punctatissimus* male?, in Raffray's collection (MNHN), *C. punctipennis* A. Raffray det. / TYPE (red) / Muséum

Paris 1917 Coll. Raffray / *C. punctipennis* var. *punctatissimus* m. Siam / Siam.

Specimens examined. <THAILAND> 2 females, Ban Na, by LT, Nakorn Sayok, C-Thailand, 13.xi.1994, S. Ohmomo leg. <MYANMAR> 1 male, Shue Hninsi, by LT, Yangon, Apr. - May 2002, Y. Kusakabe leg.

Distribution. Myanmar* (“Birma”, Yangon), Thailand (Bangkok, Ban Na*), Singapore.

Remarks. *Centrophthalmus punctipennis* var. *punctatissimus* described by Schaufuss (1877) was indicated as a synonym of the allied species, *C. clementis* Schaufuss in Nomura *et al.* (2008a). However, it was already synonymized with *C. punctipennis* by Raffray (1904, 1908, 1911).

Centrophthalmus punctipennis was described by Schaufuss (1877) from Bangkok, Thailand. However, a syntype of this species from Burma (Myanmar) is recorded for the first time by the present study. *Centrophthalmus quadristriatus* described from Singapore was also synonymized with this species.

Centrophthalmus vladimiri Blattný

Centrophthalmus vladimiri Blattný, 1925: 216.

Type material examined. 1 syntype male?, in Helfer’s collection (NHP), Mus. Pragense Tenasserim Coll. Helfer / TYPUS (red) / *C. Vladimiri* m., Blattný det. / Mus. Nat. Pragae, Inv. 18896.

Specimens examined. <MYANMAR> 2 females, Shue Hninsi, by LT, Yangon, Jun. -Jul. 2001, Y. Kusakabe leg.

Distribution. Myanmar (Tenasserim, Yangon*).

Remarks. Very similar to *C. punctipennis* in having middle-sized body (2.04-2.11 mm in length, 0.88-0.93 mm in width) and the short abdominal tergite V about 1.5 times as long as tergite IV.

However, it differs in having the sinuate dorsal carinae more distant from each other (more than a half the width of tergite V) than in *C. punctipennis*.

***Centrophthalmus helferi* Blattný**

Centrophthalmus helferi Blattný, 1925: 216.

Type material examined. 2 syntype males?, in Helfer's collection (NHP), Mus. Pragense Tenasserim Coll. Helfer / TYPUS (red) / *C. Helferi* m., Blattný det. / Mus. Nat. Praeae, Inv. 18897 / *Centrophthalmus helferi* Blattny, det. S. Kurbatov, 2000.

Specimens examined. <VIETNAM> 2 females, Cuc Phuong, by LT, 150m alt., Ninh Binh Prov., 13.vi.2002, S. Nomura leg.

Distribution. Myanmar, Vietnam*.

Remarks. This species resembles *C. punctipennis* and *C. vladimiri* in middle-sized body (2.01-2.16 mm in length, 0.84-0.85 mm in width), but it is easily separable by having the long abdominal tergite V twice as long as tergite IV.

***Centrophthalmus sinensis* Raffray**

Centrophthalmus sinensis Raffray, 1904: 495.

Type material examined. 1 syntype male?, in Raffray's collection (MNHN), Chine / Muséum Paris 1917 Coll. A. Raffray / TYPE (red) / *C. sinensis*, A. Raffray det.

Specimens examined. <VIETNAM> 1 female, Dam B'ri, by LT, ca. 900m alt., Lam Dong Prov., 30.iv.2000, S. Nomura leg.

Distribution. China, Vietnam*.

Remarks. This species is similar to *C. helferi* in having the long tergite V, but it can be separated by the small body (1.86 mm in length, 0.82 mm in width) and densely pubescent pronotum.

***Centrophthalmus granosus* Raffray**

Centrophthalmus granosus Raffray, 1895: 74.

Type material examined. 1 syntype male?, data unrecorded, in Raffray's collection (MNHN).

Specimens examined. <MALAYSIA> 3 males, Base Camp, by sifting leaf litter, 150m alt., Endau-Rompin Nature Reserve, Pahang, 22.vii.2004, S. Nomura leg.

Distribution. Singapore, Malaysia*.

Remarks. This species is distinct in the genus *Centrophthalmus* by having the large body (2.24 mm in length, 1.00 mm in width) and sparsely punctate pronotum (almost glabrous in most species).

ACKNOWLEDGEMENT

We wish to express our hearty thanks to Dr. Shun-Ichi Uéno for his critical reading of the manuscript. Our cordial thanks are due to Dr. Thierry Deuve (MNHN), Dr. Taghavian Azadeh (MNHN), and Dr. Vladimír Švihla (NHM) for their kind support for reexamination of the type materials preserved in MNHN, Paris and NHM, Praha. We are also indebted to Dr. Watana Sakchoowong, Dr. Jariya Chanpaisaeng (Kasetsart Univ., Thailand), Dr. Osamu Yata, Dr. Kazuo Ogata and Dr. Naoki Takahashi (Kyushu, Univ., Japan), Dr. Hiroaki Kojima (Tokyo Univ. of Agriculture, Japan) and Mr. Yoshiyasu Kusakabe (Yokohama, Japan) for their kind assistance in various ways.

This study is supported in part by the Grant-in-aid Nos. 13898016 and 14255016 for Field Research of the Monbukagakusho International Research Program, Japan and the

Grant-in-aid No.17255001 of the Japan Society for the Promotion of Science (JSPS).

REFERENCES

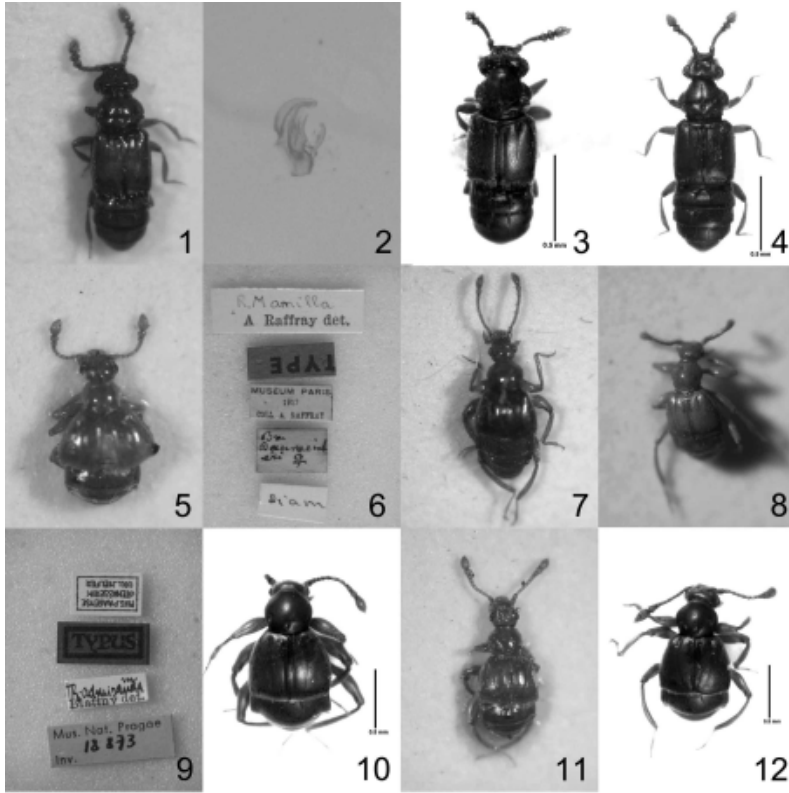
- Besuchet, C., 1986. Synonymes et homonyme nouveaux de quelques genres de Psélaphides (Coleoptera). *Revue suisse Zool.*, **93** : 257-264.
- Blattný, C., 1925. Revision der Pselaphiden der Collection Helfer. *Svorník Ent. Odd. Nár. Mus. v Plaze*, **3**: 179-222.
- Hlavac, P., and D. S. Chandler, 2005. World catalog of the species of Tyrini with a key to the genera (Coleoptera : Staphylinidae : Pselaphinae). *Folia Heyrovsk.*, **13** : 81-143.
- Jeannel, R., 1949. Faune de Congo Belge et du Ruanda Urundi, II: Pselaphidae. *Annals. Mus. Congo Belge, Tervuren* (Série 8^o: Sci. Zool.), **2**: 1-275.
- Jeannel, R., 1952. Psélaphides de Saïgon. *Revue fr. Ent.*, **19**: 69-113.
- Jeannel, R., 1957. Sur quelques Psélaphides du Tonkin recueillis par le Père A. De Cooman. *Revue fr. Ent.*, **24**: 5-32.
- Motschulsky, V., 1851. Énumération des nouvelles espèces de Coléoptères. *Bull. Soc. imp. Natural. Moskou*, **24**: 479-511.
- Nomura, S. and A. B. Idris, 2003. Faunistic notes on the batrisine species from Malaysia and Singapore (Coleoptera: Staphylinidae: Pselaphinae). *Serangga, Bangi*, **8**: 55-72.
- Nomura, S. and A. B. Idris, 2005. Faunistic notes on the pselaphine species of the supertribes Goniaceritae, Pselaphitae and Clavigeritae from Malaysia and Singapore (Coleoptera: Staphylinidae: Pselaphinae). *Serangga, Bangi*, **10**: 1-36.

- Nomura, S. and M. Mohamed, 2008. A faunistic review on the pselaphine species (Insecta, Coleoptera, Staphylinidae) known from Borneo. *Mem. natn. Mus. Nat. Sci., Tokyo*, (45): 13-40.
- Nomura, S., W. Sakchoowong, K. Ogata and J. Chanpaisaeng, 2008a. A faunistic review of the pselaphine and protopselaphine species known from Thailand (Insecta, Coleoptera, Staphylinidae) Part 1. A list of known species from Thailand. In O. Yata (ed.), *Report on Insect Inventory Project in Tropical Asia (TAIV)*, pp. 253-264.
- Nomura, S., W. Sakchoowong, K. Ogata and J. Chanpaisaeng, 2008b. Lists of pselaphine and protopselaphine species (Coleoptera, Staphylinidae) collected from Doi Inthanon and Khao Yai National Parks. In O. Yata (ed.), *Report on Insect Inventory Project in Tropical Asia (TAIV)*, pp. 265-294.
- Raffray, A., 1891. Voyage de M. E. Simon aux îles Philippines (Mars et Avril 1890). Psélaphides. *Annals. Soc. Ent. France*, **60**: 473-496.
- Raffray, A., 1895. Révision des Psélaphides des Iles de Singapore et de Penang (suite et fin). *Revue Ent., Caen*, **14**: 21-82.
- Raffray, A., 1896. Nouvelles études sur les Psélaphides et les Clavigérides. *Annals. Soc. Ent. France*, **65**: 227-284.
- Raffray, A., 1904. Genera et catalogue des Psélaphides. *Annals. Soc. Ent. France*, **73**: 401-476.
- Raffray, A., 1908. Coleoptera. Fam. Pselaphidae. In Wytsmann, P. (ed.), *Genera Insectorum*, 64th fascicule. 487 pp., Rome.
- Raffray, A., 1911. Pselaphidae. In Schenkling, S. (ed.), *Coleopterorum Catalogus*, pars 27. 222 pp., W. Junk, Berlin.

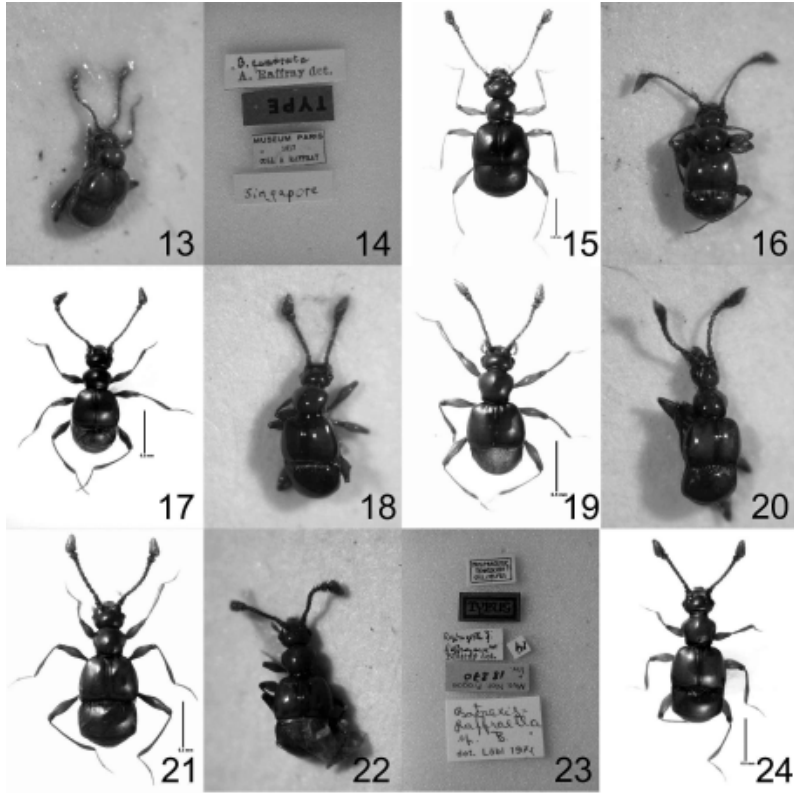
Reitter, E., 1883. Beitrag zur Pselaphiden- und Scydmaeniden-Fauna von Java und Borneo. II. Stück. *Verh. Zool.- bot. Ges. Wien*, **33**: 387-428.

Schaufuss, L. W., 1877. Pselaphiden Siam's. 25 pp., Ferdinand Thomass.

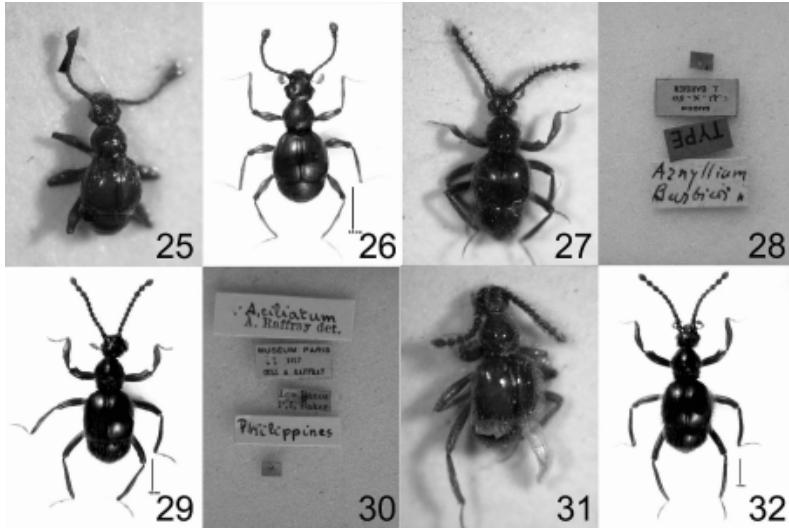
Schmidt-Goebel, H. M., 1838. Beytrag zu einer Monographie der Pselaphen, enthaltend neue Species aus Asien. Erste Lieferung. 16 pp., Gottlieb Haase Söhne, Prague.



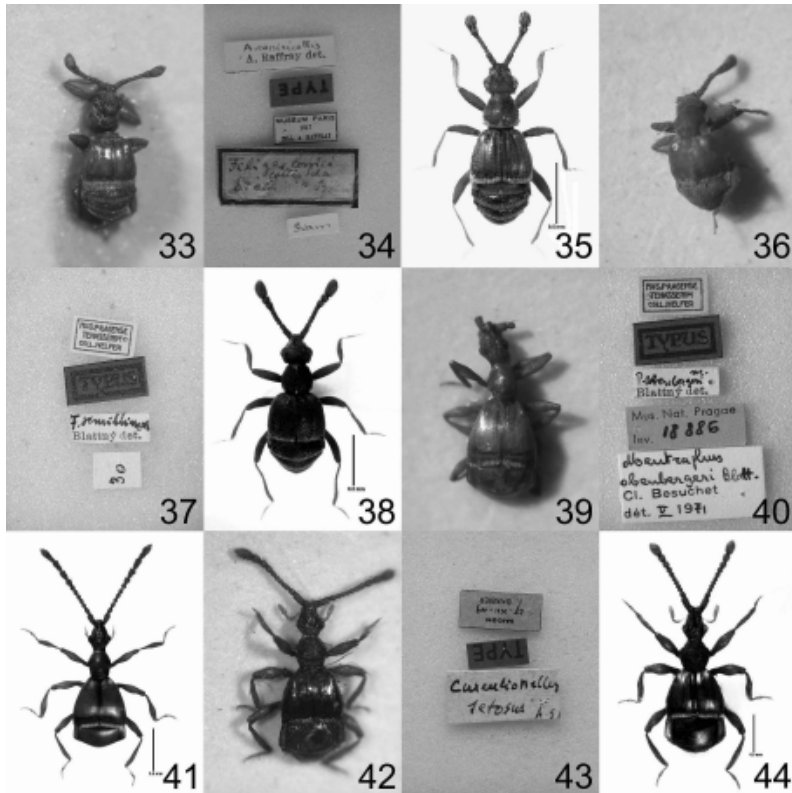
Figs. 1-12, 1, *Pareuplectops coomani* Jeannel, syntype; 2, ditto, male genitalia; 3, ditto, male from Menglum, China; 4, ditto, female from Lum Jangwat, Thailand; 5, *Trissemus mamilla* (Shaufuss), syntype; 6, ditto, labels; 7, ditto, male from Saigon, Vietnam; 8, *Reichenbachia admiranda* Blattný (= *T. mamilla*), syntype; 9, ditto, labels; 10, *T. mamilla*, male from Yangon, Myanmar; 11, *Reichenbachella budha* (Raffray), syntype; 12, ditto, male from Yangon, Myanmar. Scale: 0.5 mm.



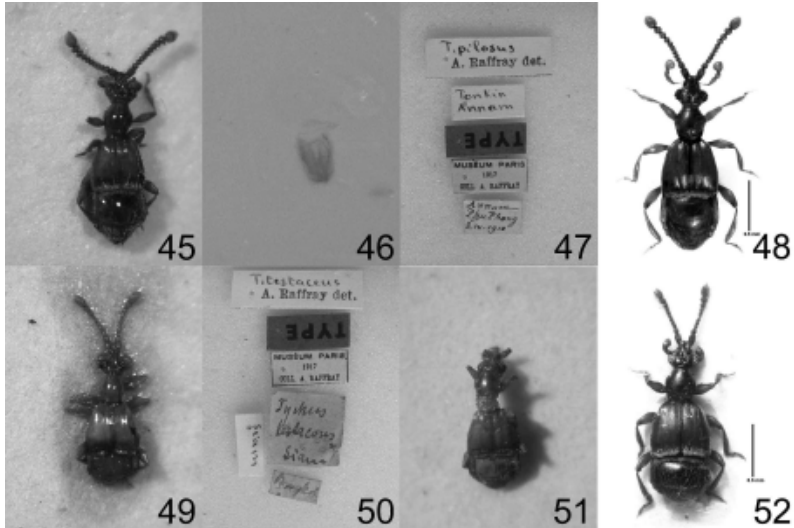
Figs. 13-24, 13, *Batraxis quadrata* Raffray, syntype; 14, ditto, labels ; 15, ditto, male from Khao Yai, Thailand; 16, *Batraxis brevis* Raffray, syntype; 17, ditto, male from Pasoh, Malaysia; 18, *Batraxis instabilis* Raffray, syntype; 19, ditto, male from Khao Yai, Thailand; 20, *Batraxis miritaris* Raffray, syntype; 21, ditto, male from Khao Yai, Thailand; 22, *Batraxis raffrayana* (Blattný), syntype; 23, ditto, labels; 24, ditto, male from Yangon, Myanmar. Scale: 0.5 mm.



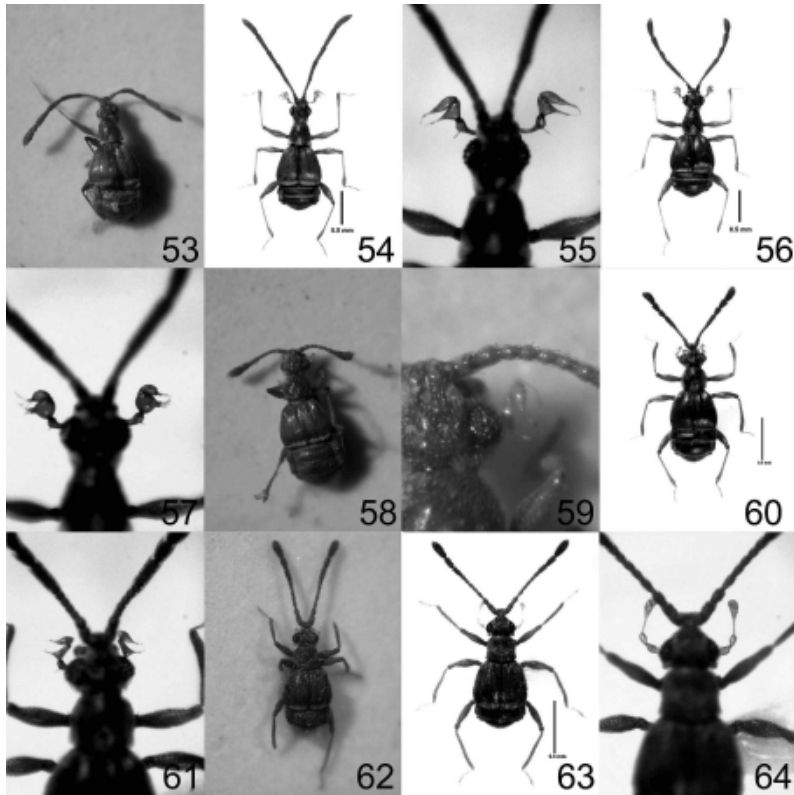
Figs. 25-32, 25, *Comatopselaphus puncticollis* Raffray, syntype; 26, ditto, male from Endau-Rompin, Malaysia; 27, *Harmophorus barbieri* (Jeannel), syntype; 28, ditto, labels ; 29, ditto, male from 14km from Bao Loc, Vietnam. 30, *Harmophorus ciliatus* (Raffray), identified specimen from the Philippines, labels; 31, ditto, identified specimen from Tonkin, Vietnam; 32, ditto, female from Dam B’Ri, Vietnam. Scale: 0.5 mm.



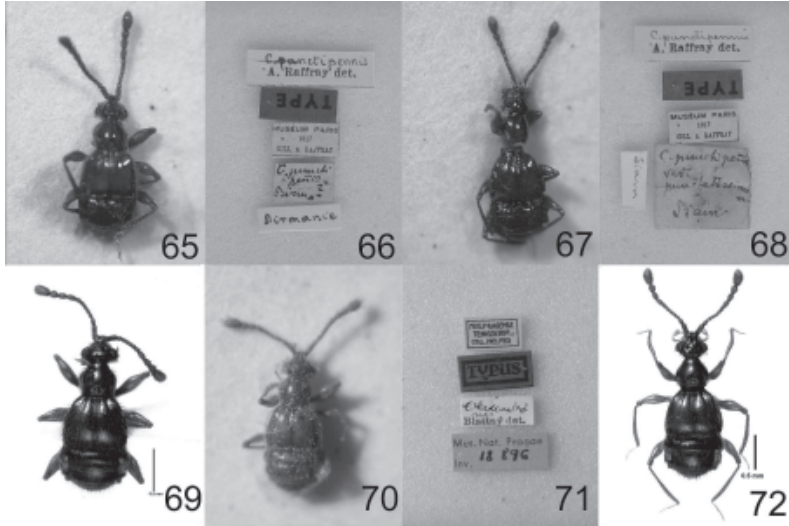
Figs. 33-44, 33, *Apharina conicicollis* (Shaufuss), syntype; 34, ditto, labels; 35, ditto, male from Khao Yai, Thailand; 36, *Stipesa simillimus* (Blattný), syntype; 37, ditto, labels; 38, ditto, male from Yangon, Myanmar; 39, *Mentraphus obenbergeri* (Blattný), syntype; 40, ditto, labels; 41, ditto, male from Yangon, Myanmar; 42, *Curculionellus setosus* Jeannel, syntype; 43, ditto, labels ; 44, ditto, female from Khao Ang Runai, Thailand. Scale: 0.5 mm.



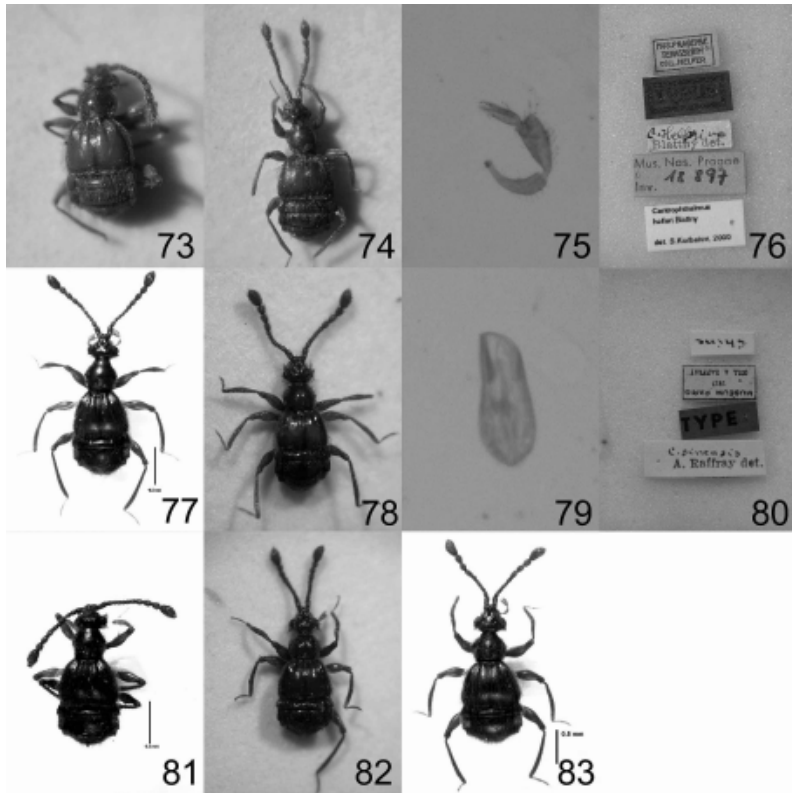
Figs. 45-52, 45, *Tyraphus pilosus* Raffray, syntype; 46, ditto, male genitalia; 47, ditto, labels; 48, ditto, male from Yangon, Myanmar (scale: 0.5 mm); 49, *Tyraphus testaceus* (Shaufuss), syntype; 50, ditto, labels; 51, *Tyraphus nitens* Blattný, syntype; 52, *Tyraphus testaceus*, male from Tuong Lynh, Vietnam. Scale: 0.5 mm.



Figs. 53-64, 53, *Ctenistes hindustanus* Motschulsky, identified specimen by Blatný; 54, ditto, male from Yangon, Myanmar; 55, ditto, maxillary palpi enlarged; 56, *Ctenistes globripalpus* Schmidt-Goebel, male from Yangon, Myanmar; 57, ditto, maxillary palpi enlarged; 58, *Indiella birmanensis* (Motschulsky) (= *Sognorus birmanensis*), identified specimen Blatný; 59, ditto, maxillary palpi enlarged; 60, ditto, male from Yangon, Myanmar; 61, ditto, maxillary palpi enlarged; 62, *Odontalgus gracilis* Raffray, syntype; 63, ditto, male from Deo Bao Loc, Vietnam; fig. 64, ditto, maxillary palpi enlarged. Scale: 0.5 mm.



Figs. 65-72, 65, *Centrophthalmus punctipennis* Schaufuss, syntype; 66, ditto, labels; 67, *Centrophthalmus punctipennis* var. *punctatissimus* Schaufuss, syntype; 68, ditto, labels; 69, ditto, male from Yangon, Myanmar; 70, *Centrophthalmus vladimiri* Blattný, syntype; 71, ditto, labels; 72, ditto, male from Yangon, Myanmar. Scale: 0.5 mm.



Figs. 73-83, *Centrophthalmus helferi* Blatný, syntype; 74, ditto, another syntype; 75, ditto, maxillary palpus enlarged; 76, ditto, labels; 77, ditto, male from Cuc Phuong, Vietnam; 78, *Centrophthalmus sinensis* Raffray, syntype; 79, ditto, male genitalia enlarged; 80, ditto, labels; 81, ditto, male from Dam B'ri, Vietnam; 82, *Centrophthalmus granosus* Raffray, syntype; 83, ditto, male from Endau-Rompin, Malaysia. Scale: 0.5 mm.